



ORLANDO DRILLING

Safety and Sample Quality is Paramount

Orlando Drilling

Capability Statement





ORLANDO DRILLING

Safety and Sample Quality is Paramount

Our Vision

Our vision is to be your preferred choice in drilling.

In pursuit of this vision, we will perform drilling safely, with expertise and excellent sample quality. Our goal is to exceed your drilling expectations and to deliver safe, high-quality drilling.



ORLANDO DRILLING

Safety and Sample Quality is Paramount



Cultivate

We build trust with honesty, integrity and accountability.



Innovate

We think outside the box.



Deliver

We deliver on our promise of excellence.



Empower

We empower all to contribute and grow.

Core Values



ORLANDO DRILLING

Safety and Sample Quality is Paramount

Company Overview

Orlando Drilling is a leading provider of drilling services to Australian exploration and mining companies, specialising in Reverse Circulation (RC) and Air Core (AC) Drilling. Our strong commitment to safety, professionalism, and high-sample quality drilling sets us apart.

With a focus on retaining excellent staff and utilising modern equipment, we deliver the highest level of service to our clients. We are specialists in deep hole RC exploration, resource definition, and grade control drilling. We excel in large and small footprint truck or track-mounted drill rigs.

Our priority is to ensure sample accuracy, target precision and productive drilling with excellent customer service and professionalism.

What We Do

We specialise in performing with quality excellence and professionalism:

- Exploration Drilling
- Grade Control Drilling
- Resource Definition Drilling
- Slim-Line RC
- Deep Hole RC Exploration Drilling
- Water Exploration Drilling
- Water Bore / Monitoring Hole (Drill & Install)

Orlando Drilling specialise in drilling:

- Reverse Circulation (RC)
- Air Core (AC)



Why Orlando Drilling

Orlando Drilling owns and operates a modern Air Drilling fleet of 13 Drill Rigs.

Orlando has significant operational experience drilling throughout WA across various commodities and ground conditions. Orlando have the ability to perform remote drilling operations as well as mine site-based programs.

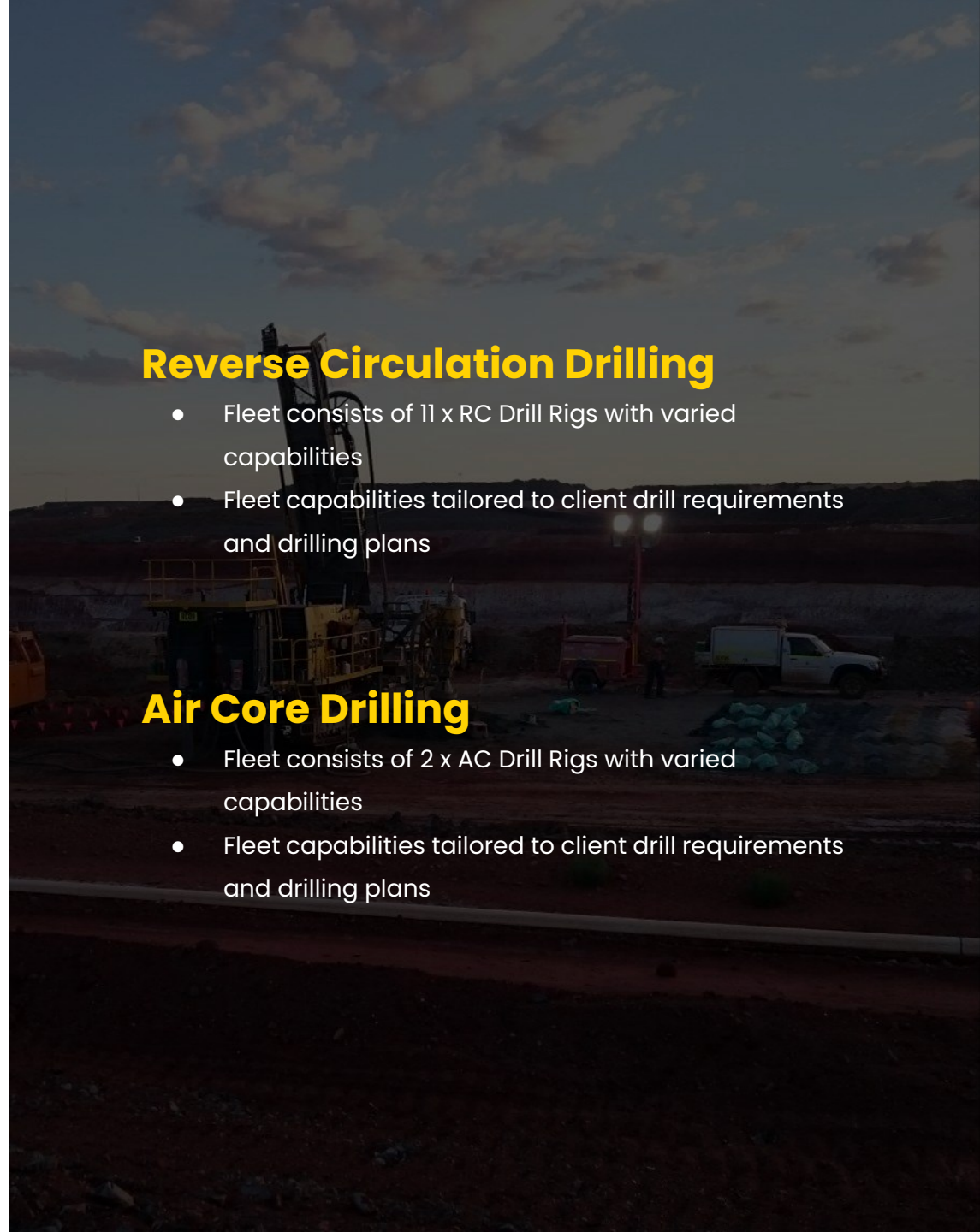
Together with highly experienced management and field leadership teams we can safely and efficiently support your drilling programs.

Reverse Circulation Drilling

- Fleet consists of 11 x RC Drill Rigs with varied capabilities
- Fleet capabilities tailored to client drill requirements and drilling plans

Air Core Drilling

- Fleet consists of 2 x AC Drill Rigs with varied capabilities
- Fleet capabilities tailored to client drill requirements and drilling plans





Dedicated to Safety

Our commitment to safety transcends standard practice, positioning us as leaders in establishing and maintaining the highest safety standards within the industry.

Guided by visionary leadership, our strategy encompasses the adoption of future-driven systems that exceed ISO 45001 and 9001 management benchmarks.

We proactively identify and mitigate risks through comprehensive training, rigorous protocols, and cutting-edge technology, aiming for zero incidents.

This unwavering dedication ensures the protection and well-being of our employees, contractors, and community stakeholders, demonstrating our belief that safety is not just a priority, but an integral part of our operational DNA.

Geographical Areas of Operation

Client	Project	# of Rigs	Services	Site Type	Commodity	Term
Delta Lithium	Yinnetharra	2	RC	Exploration	Lithium	2023 - Present
Allkem	Mt Cattlin	1	RC	Exploration	Lithium	2021 - 2023
Pilbara Minerals	Pilgangoora	2	RC	Exploration	Lithium	2022 - 2023
FQM Nickel Aust	Ravensthorpe	1	RC	Mine Site	Nickel	2021 - 2023
Rumble Resources	Earaheedy	1	RC	Exploration	REE	2023
Victory Metals	North Stanmore	1	AC / RC	Exploration	REE	2022 - 2023
Northern Star Resources	Carosue Dam Thunderbox	3	RC	Mine Site / Exploration	Gold	2014 - Present
Industrial Minerals	Pippingarra	1	RC	Exploration	Lithium	2023
Pantoro	Norseman	1	RC	Mine Site	Gold	2022 - 2024
Sandfire Resources	DeGrussa & Queensland Exploration	3	RC	Exploration	Copper	2018 - 2023
Nathan River Resources	Roper Bar (NT)	1	RC	Mine Site / Exploration	Iron Ore	2020 - 2021



- Orlando Drilling Locations
- Dynamic Drilling Locations





ORLANDO DRILLING

Safety and Sample Quality is Paramount

Our Equipment





ORLANDO DRILLING

Safety and Sample Quality is Paramount

RC Drill Rigs & Equipment

Precision, Powerful Performance, Mobility & Durability

Orlando has a highly versatile drill fleet and efficient options for both truck/track RC drill rigs and equipment that are designed to perform safely, reliably and with optimum drilling results in any region, terrain or geology.

Quick Facts

- 5 Schramm T685 drill rigs
- 5 Atlas Copco E220/235 drill rigs (3 track; 2 truck)
- 1 Epiroc D65 XLF (grade control)
- All truck drill rigs vehicles are Mercedes Benz Actros 8 x 8
- Both truck and track booster and auxiliary unit options available
- Full exploration fleets, accommodation and messing units
- RC deep range depth capability (Schramm and Explorac+500m)
- Safe, compliant walkways/handrails and steps (AS1657).
- Optimised 20ft stores units of critical parts and drill consumables
- Versatile splitter options: Rotary Cone, Fixed Cone or Riffle

Schramm T685

Power and Durability

The Schramm T685 is a highly versatile and efficient drill rig, offering numerous benefits in drilling operations. The T685's high air capacity ensures high production as a stand-alone rig and optimum benefits when coupled with its boosted air unit for cost-effective deep hole exploration programs. Equipped with advanced features, including a large hoist capacity, rod handler & in-mast breakouts, the Schramm T685 stands out as a reliable choice for industries requiring precision, mobility, and durability in their drilling operations.

Quick Facts

- Manufacturer: Schramm Australia
- Model: T685 WS Truck Mounted (Mercedes Benz Actros 8 x 8)
- Compressor: Sullair 500
- Air Capacity: 1250cfm@500psi
- Deck Engine: CAT 27 (850HP); EURO III Emission Standards
- Noise Suppression: <85dba at 7.0m
- Fire Suppression: LOP (Loss of Pressure) System
- Sample System: Rig mounted cyclone hydraulic rotation arm raise/lower
- Splitter Options: Rotary Cone, Fixed Cone or Riffle
- Pullback Capacities: 60,600lb (32,000kg)
- Depth Capacity: 500+m
- Walkways/Handrails/Steps: Compliant with Australian Standards (AS1657)



Schramm T685 Benefits

Robust Performance

The Schramm T685 stands as a globally tested, robust drill rig with substantial pullback force and an integrated compressor. This heavy-duty equipment excels in various drilling methods, including down-the-hole hammer, air rotary, mud rotary, and dual tube techniques.

Drilling Flexibility

The distinct design of the drill rig subframe allows secure installation on standard trucks, crawler undercarriages, or specialised vehicles. With its dual-motor, high-capacity, single-reduction top head drive rotation, and efficient pipe handling systems, this series is well-suited for the most challenging drilling projects.



Atlas Explorac 220/235RC

Powerful, Compact & Versatile

Atlas Copco Explorac 220RC and E235 drill rigs excel in delivering versatile drilling to cater to the demands of both exploration and mine site projects. With a compact design, these rigs are exceptional in catering precision RC drilling across diverse terrain with optimum results.

Advanced hydraulics on both track and truck rigs provide reliable performance and high mechanical availability. Smart design rig remote consoles prioritise operator safety and enable drilling away from the rig. Built with improved fuel efficiency in mind, these rigs are a great choice in providing cost effective RC exploration for the best results.

Quick Facts

- Manufacturer: Atlas Copco
- Model: Explorac 220RC Truck Mounted (Mercedes Benz Actros)
- Model: Explorac 220RC Track Mounted (Small Footprint Track-base)
- Compressor: Atlas Copco XRX12
- Air Capacity: 1260cfm@365psi or 1050cfm@450psi
- Deck Engine: CAT C18 (700HP); EURO III Emission Standards
- Noise Suppression: <85dba at 7.0m
- Operators Control and Rod Handling: Remote control of 10m distance
- Fire Suppression: LOP(Loss of Pressure) System
- Sample System: Rig mounted cyclone hydraulic rotation arm raise/lower
- Splitter Options: Rotary Cone, Fixed Cone or Riffle
- Pullback Capacities: 50,600lb (23,000kg)
- Depth Capacities: 400+m
- Walkways/Handrails/Steps: Compliant with Australian Standards (AS1657)



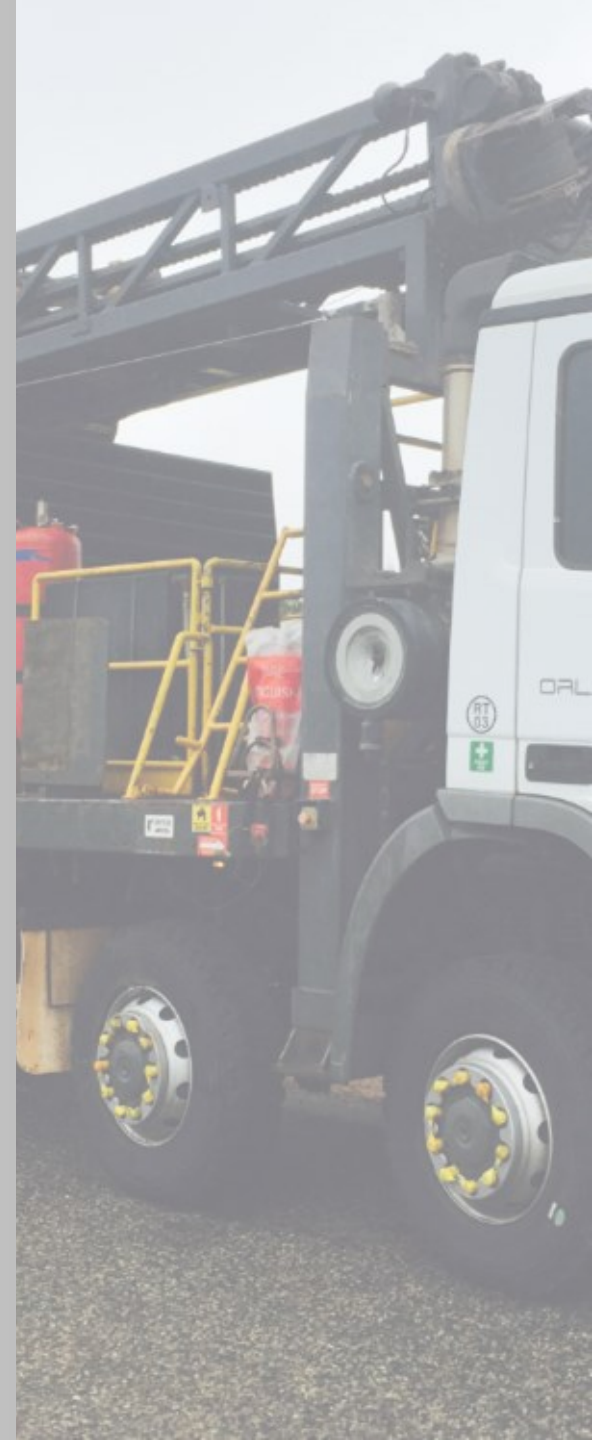
Atlas 220/235RC Benefits

Versatile Cost-Effective Drilling

The smart design of the Atlas Copco Explorac 220 and E235 RC ensures greater versatility on operations. These drill rigs excel in compact areas to better optimise operations with solutions across our nimble track and truck fleet options. Cost effective fuel consumption and reliable construction provide greater optimisation in remote operations for long-term durability with proven performance.

Total Control

User-friendly remote-controlled operator panel enabling precise control of pipe handlers and hydraulic break-outs from a distance. With a powerful on-board compressor and large capacity rod bin these rigs are designed to go everywhere.



Atlas SmartRoc D65 XLF

Intelligent Future Proof Automation

The Atlas Copco SmartROC D65 XLF presents a multitude of advantages, transforming drilling operations. Its efficacy lies in consistently delivering high-quality drillholes within a compact footprint. Equipped with intelligent features like automated drilling and rod handling, it enhances productivity and reduces manual labour.

Quick Facts

- Manufacturer: Atlas Copco
- Model: SmartROC D65 XLF Track Mounted
- Compressor: 30bar / 435psi / 995 cfm
- Deck Engine: Cat C15 – 402kW (539hp)
- Booster connection : greater DH air delivery
- Angle Capability: 45° – 90°
- Rod Handler: Automatic rod handling unit
- Pullback Capability: 50kN
- Depth Capacity: 0-54m
- Sample System: Rig mounted Ox Engineering Cyclone and fixed Metzke three chute cone splitter
- Trimming Dimensions:
 - Weight (Approx) - 26 450 kg
 - W - 3000mm , L - 12400mm, H - 3500mm
- Walkways/Handrails/Steps: Compliant with Australian Standards (AS1657)
- Operators Cabin: ROPS and FOPS approved cabin
- Fuel Tank: 975L



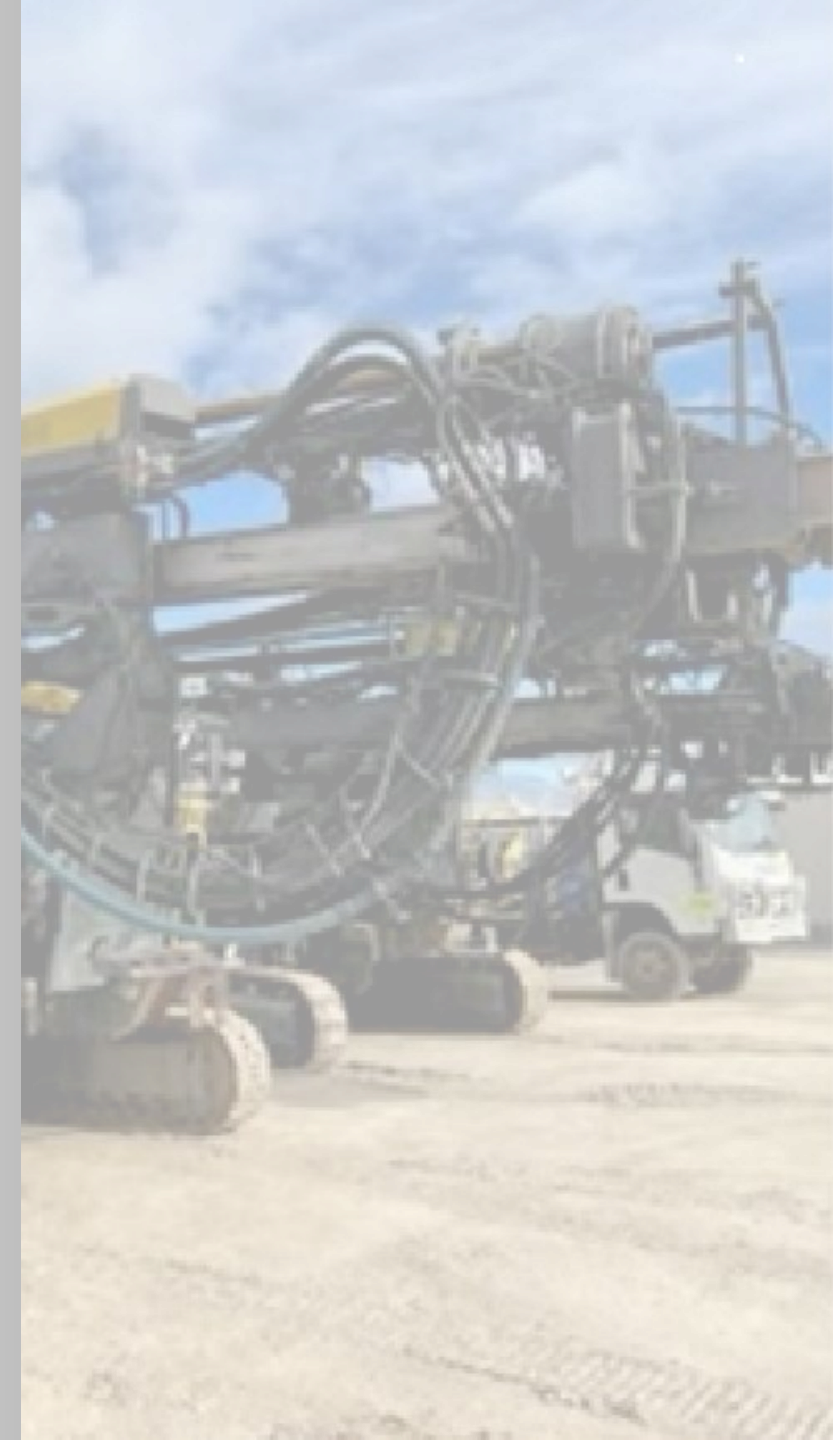
Atlas D65 Benefits

Precise, Powerful Drilling

The D65 reliably produces top-notch drillholes with precision. It comes equipped with intelligent features like automated drilling and rod handling.

Maximum Versatility

The extended 8m feed option enables the use of 8m drill rods extending the depth capability of the onboard rod-carousel. Perfectly suited for productive Grade Control environments this rig sets a high standard.





ORLANDO DRILLING

Safety and Sample Quality is Paramount

AC Drill Rigs & Equipment

Precision, Powerful Performance, Mobility & Durability

Orlando has a tailored and versatile Air Core fleet with options for both truck/track AC drill rigs and equipment that are designed to perform safely, reliably and with optimum drilling results in any region, terrain or geology. High-capacity on-board air compressors for high productivity and a small/compact footprint make access into all drilling locations a breeze.

Quick Facts

- 1 AustEX X300-HC Track Mount Drill Rig
- 1 Rotomec R50 Truck Mount Drill Rig
- Full exploration fleets, accommodation and messing units
- AC deep range depth capability 150m+
- Optimised stores units of critical parts and drill consumables



ORLANDO DRILLING

Safety and Sample Quality is Paramount

AustEx X300-HC

Highly Capable & Productive

The AustEx X300-HC track mount drill emerges as a powerhouse in drilling. Its robust design and track mount configuration ensure stability and mobility in diverse terrains, from rugged landscapes to challenging environments. Built to be powerful and reliable machine, it's configured to maximise drilling efficiency and deliver high quality drilling results.

Quick Facts

- Manufacturer: AustEx
- Model: X300-HC Track Mounted
- Compressor: XRV9 350psi / 850 cfm
- Depth Capacity: 150m+
- Sample System: Rig mounted Ox Engineering Cyclone
- Walkways/Handrails/Steps: Compliant with Australian Standards (AS1657)



AustEx X300 Benefits

Peak Efficiency

The AUSTEX X300 HC stands out as a high-performing air-core and shallow slim-line RC rig, featuring a 350 psi/980 cfm compressor. With a fuel burn of only 80L per hour, this rig proves to be both economical and highly productive.

The X300's efficiency makes it an ideal companion for the initial phases of exploration, ensuring a cost-effective and efficient drilling process. The X300 HC's small footprint capabilities, coupled with its fuel efficiency, make it a valuable asset for exploration projects, promising reliability and productivity during the program.





ORLANDO DRILLING

Safety and Sample Quality is Paramount

Rotomec R50

Reliability at Depth

The Rotomec R50 truck mount drill stands out as a highly mobile and versatile drilling companion, especially when it comes to fast-paced and reliable AC drilling servicing both exploration and mining projects. Its robust build and easy to work on design ensure durability, allowing the R50 to maintain consistent and reliable performance even at great depths.

Quick Facts

- Manufacturer: Rotomec
- Model: R50 Truck Mounted
- Compressor: XRV9 350psi / 850 cfm
- Depth Capacity: 150m+
- Sample System: Rig mounted Ox Engineering Cyclone
- Walkways/Handrails/Steps: Compliant with Australian Standards (AS1657)



Rotomec R50 Benefits

Peak Mobility

The Rotomec R50 truck mount drill emerges as a formidable drilling solution, boasting numerous advantages. With its XRV9 compressor offering 350 psi/850 cfm, the R50 ensures powerful and efficient drilling operations. With a remarkable depth capacity of 150m+, it tackles diverse drilling tasks with ease.

Reliable Sampling

The rig-mounted Ox Engineering Cyclone sample system further enhances its capabilities, ensuring accurate and reliable sample collection.





ORLANDO DRILLING

Safety and Sample Quality is Paramount

Group Services



Dynamic
DRILL & BLAST

- Quarry Blasting
- Open Pit Mining (All Minerals)
- Pre-Splitting
- Contour / Pioneering



ORLANDO DRILLING

Safety and Sample Quality is Paramount

- Reverse Circulation Drilling (RC)
- Air Core Drilling (AC)



- Water Bore & Hydro Drilling
- Production Reinjection Bores
- Artesian Bore Drilling

AIRWELL 
Flow Testing Services

- Geophysical Logging & Pump Testing
- Flow Testing

Contact

Orlando Drilling | ABN 24 113 676 083

P +618 9359 8100

E info@orlandodrilling.com.au

W www.orlandodrilling.com.au

Locations

Perth Head Office

76 Hasler Road Osborne Park WA 6017

Kalgoorlie Office

267 Hannan Street Kalgoorlie WA 6430

Perth Workshop

22-26 Imperial Street High Wycombe WA 6057



ORLANDO DRILLING

Safety and Sample Quality is Paramount